

Samsung SDS  
**smart doorlock**  
catalog

smart answer



**SAMSUNG SDS**



**SAMSUNG SDS**



# Why Samsung smart door lock?

## A Trend Leader in the Door Lock Market

- A push-pull product with dramatic improvements on the use convenience.
- The touch type was adapted in the door lock product for the first time.
- A world-class optical finger print recognition module is installed in the door lock.

## Various Smart Mechanisms

- The convenient smart tag to attach on the mobile phone.
- Locking notification on touch panel alerts you to the status of the door. ('Locked', 'Unlocked', etc.)
- Various access methods including finger print, passwords, RF cards, key tag and emergency override key.
- Fire sensor applied for alerting on sensing abnormal high temperature inside.
- The door lock activated on a user approaching in front by using IR sensor.

## Quality Tests for Excellent Products

- **Electric Shock Paralysis Test**  
To prevent illegal entrance using the electric shock, the electric shock paralysis test is performed.
- **High/Low Temperature & Humidity Operation Test**  
The high/low temperature & humidity test is performed to maintain the safety during a fire or in any climate environment.
- **Door Opening & Closing Test**  
The lock is usable for 33 years if used 10 times daily as proven the self-test of 40,000 opening trials.
- **Mortise Lock Test**  
The mortise lock, the center of digital lock, is usable for about 27 years if used 10 times daily as proven by the self-test of 120,000 trials.
- **Maximum 39 Samsung Quality Tests Performed on each Product**  
Tests including the basic reliability, the climate environment, the power environment, the lifespan and the endurance test are performed for the excellent quality.

## Excellent Design

Samsung Smart Door Lock with digital & modern style adds more beauty to the interior of the entrance area.

The world's first! Samsung smart door lock's achievement of a grand slam for the international design awards.



The international forum design  
(iF Design) in Germany



Nordrhein westfalen design center  
in Germany



The industrial designers society  
of America

# Keyless & Safe Samsung Smart Door Lock



Convenience



Chic Design



Security



## Door Lock Not an Option, a Necessity

- Feel at ease when you go out! The door opens with the password so no need to carry any heavy keys when you go out even for jogging.
- If the whole family is busy finding keys every morning, Samsung Smart Door Lock is the answer. Lock opens with a password, no more worrying about losing keys.
- The automatic locking feature eliminates the need to check for the door lock when you go out.
- The emergency alarm alerts in case of an intrusion.



# A safe and convenient life made accessible by the Samsung Smart Door Lock

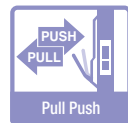
## Convenience

### User-friendly access

Smart Door Lock accommodates each person's individual lifestyle with the variety of access methods. (Passwords / RF Card / Finger print / Smart tag / Mechanical override key)

### Touch pad screen

With the wide touch screen, not only the design becomes more modern and stylish, but the touch feel on entering the password is improved.



#### Just one step to open!

A new concept of push and pull design makes it convenient to use.  
Easy single-motion to open door.



#### Automatic locking

The automatic locking feature eliminates the need to re-check for the door lock when you go out. Feel at ease when you go out and keep your home safe.



#### Auto polling

RF card or key tag is instantly authenticated for access without the need to press the wake-up button.



#### Easy Installation

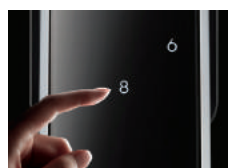
Double latch is applied for installation regardless the use direction.  
(Left/Right hand)

## Enhanced Safety

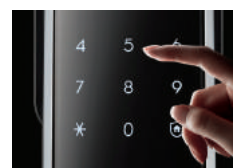


### Random security code feature

Password will be pressed after pressing two random numbers, preventing intruders from checking the fingerprint marks left.



2 random numbers appear before entering password



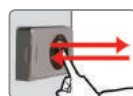
Press the password



Impossible to guess password due to random fingerprint marks



### Intrusion prevention



The door can't be opened even if the [OPEN/CLOSE] button is pressed inside unless the sensor detects inside movement.



### Double authentication

The double authentication mode strengthens security.  
Password plus fingerprint/card must be authenticated to open the door(Optional).



### Anti-theft mode

When leaving, the user can set up the anti-theft mode by simply pressing the button, preventing tampering by creating a warning sound.



### In home security (Double-locking)

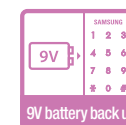
When you are at home, double-locking prevents unexpected unlocking attempts from outside. You can enable it by using the [OPEN/CLOSE] button or the double-locking button.

## Enhanced function



### Key pad volume control

Volume adjustable.



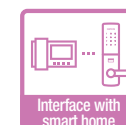
### 9V battery back-up

When batteries are discharged, put 9V battery to back-up power.



### Low battery warning signal

A beep sound during door access will alert you to replace batteries.



### Interface with Samsung Smart Home

The lock has an interface with Samsung video door phone or home automation to unlock the door.



### Master function

Passwords/Card sets are available for the master key for overall management.

# SHS-P718

- New Push-Pull design is easier to use.  
(Push to enter, pull to exit)
- Speedy and accurate access with the optical finger print authentication
- Push to enter, and pull to enter models are available.
- Automatic wake-up on approaching by using IR sensor
- The door lock status is displayed on the front panel in text for the user's convenience
- Manner mode is available for quiet entrances in late nights (Button sound is muted.)



Size  
Exterior body : 85x385x61mm  
Interior body : 86x354.8x63mm



## Model code

Code	Handle type (Inside/Outside)	Mortise		Color
		AML220	AML320	
SHS-P718XMK/EN	Push-Pull	○		Black
SHS-P718LMK/EN	Pull-Push	○		
SHS-P718XBK/EN	Push-Pull		○	
SHS-P718LBK/EN	Pull-Push		○	

## Specification

Password	4~12 digit number combination
Fingerprint	Capacity 100 fingerprints (max.)
RFID Card/Password	Capacity 31 (Max.)
Door thickness	AML220 : 40~60mm
	AML320 : 61~80mm
Power	DC 6V (AA Alkaline batteries) x 8
Battery life	Approximately 12 months (Average ~ 10 times per day)

# SHS-P717

- New Push-Pull design is easier to use.  
(Push to enter, pull to exit)
- Push to enter, and pull to enter models are available.
- Automatic wake-up on approaching by using IR sensor
- The door lock status is displayed on the front panel in text for the user's convenience.
- Manner mode is available for quiet entrances in late nights. (Button sound is muted.)



Size  
Exterior body : 85x346.5x61mm  
Interior body : 86x354.8x63mm



## Model code

Code	Handle type (Inside/Outside)	Mortise		Color
		AML220	AML320	
SHS-P717XMK/EN	Push-Pull	○		Black
SHS-P717LMK/EN	Pull-Push	○		
SHS-P717XBK/EN	Push-Pull		○	
SHS-P717LBK/EN	Pull-Push		○	

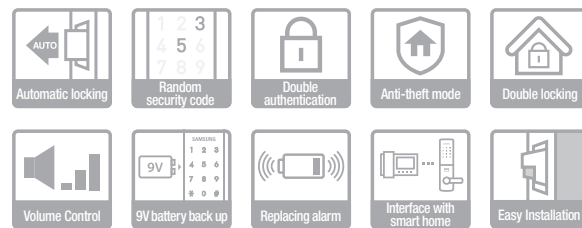
## Specification

Password	4~12 digit number combination
RFID Card/Password	Capacity 31 (Max.)
Door thickness	AML220 : 40~60mm
	AML320 : 61~80mm
Power	DC 6V (AA Alkaline batteries) x 8
Battery life	Approximately 12 months (Average ~ 10 times per day)

With handle type

# SHS-H705

- Biometric access.
- The optical operation recognizes fingerprints faster and with higher accuracy.
- The fingerprint recognition part has the automatic cover to be robust against any dust or foreign materials.



Size  
Exterior body : 81.3x318x75mm  
Interior body : 79x290x80mm

## Model code

Code	Mortise		Color
	AML220	AML320	
SHS-H705FMK/EN	O	-	Black
SHS-H705FMG/EN	O	-	Gold
SHS-H705FMR/EN	O	-	Pinkgold
SHS-H705FMM/EN	O	-	Black & Gold
SHS-H705FBK/EN	-	O	Black
SHS-H705FBG/EN	-	O	Gold
SHS-H705FBR/EN	-	O	Pinkgold

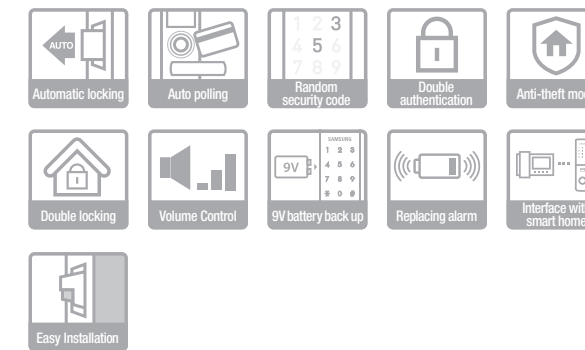
## Specification

Password	4~12 digit number combination
Fingerprint	Capacity 100 fingerprints (max.)
Door thickness	AML220 : 40~60mm
	AML320 : 61~80mm
Power	DC 6V (AA Alkaline batteries) x 8
Battery life	Approximately 10 months (Average - 10 times per day)

With handle type

# SHS-H635

- Modern design with metallic outer body that goes well with any door exterior.
- Red circle LED indicator allows more convenient entrance/exit verification.
- Reddot design award.



Size  
Exterior body : 81x306x64mm  
Interior body : 79x290x80mm



## Specification

Password	5~12 digit number combination
RF ID card	Capacity 20 (max.)
Door thickness	AML220 : 40~60mm
	AML320 : 61~80mm
Power	DC 6V (AA Alkaline batteries) x 8
Battery life	Approximately 12 months (Average - 10 times per day)

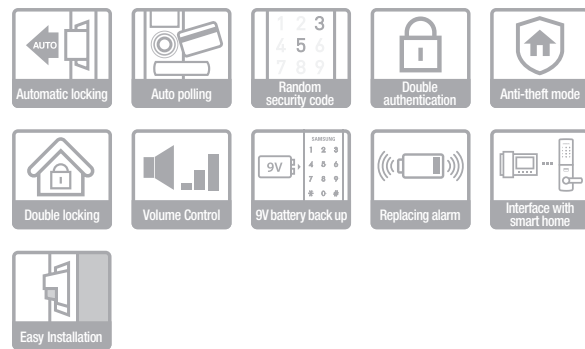
## Model code

Code	Mortise		Color
	AML220	AML320	
SHS-H635FMS/EN	O	-	Silver
SHS-H635FBS/EN	-	O	Silver
SHS-H635FBG/EN	-	O	Gold

With handle type

# SHS-H625

- Best-selling model.



Size  
Exterior body : 82x299x66.5 mm  
Interior body : 79x290x80 mm



## Model code

Code	Mortise		Color
	AML220	AML320	
SHS-H625FMK/EN	O	-	Black
SHS-H625FBK/EN	-	O	

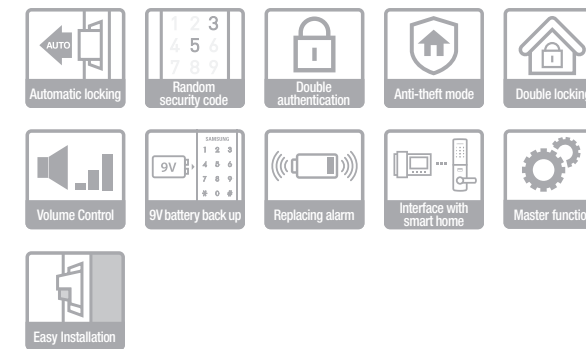
## Specification

Password	4~5 digit number combination
RF ID card	Capacity 20 (max.)
Door thickness	AML220 : 40~60mm
	AML320 : 61~80mm
Power	DC 6V (AA Alkaline batteries) x 8
Battery life	Approximately 12 months (Average - 10 times per day)

With handle type

# SHS-H505

- Seamless front panel.  
- Circle wake-up indicator.  
- Efficient delivery of essential, high quality functions.



Size  
Exterior body : 81x302x66 mm  
Interior body : 79x290x80 mm



## Model code

Code	Mortise		Color
	AML220	AML320	
SHS-H505FMK/EN	O	-	Black
SHS-H505FBK/EN	-	O	

## Specification

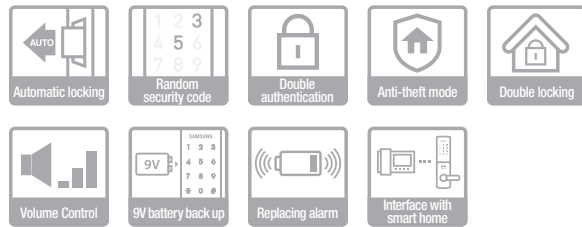
Password	4~12 digit number combination
RFID Card/Password	Capacity 31 (max.)
Door thickness	AML220 : 40~60mm
	AML320 : 61~80mm
Power	DC 6V (AA Alkaline batteries) x 8
Battery life	Approximately 18 months (Average - 10 times per day)



Without handle type

# SHS-3320

- Mechanical override key available.
- Design award grand slam.  
(iF/ Reddot/IDEA design award)
- Standard 160/161 prep. installation.
- Adaptable to various door types by adjustable deadbolt.
- Easy installation as there is no need to make additional holes.



Access



Size  
Exterior body : 68 x 180 x 36.5mm  
Interior body : 68 x 180 x 38.3mm

## Model code

Code	Lockset		Mechanical override key	Color
	Deadbolt	Rim lock		
SHS-3320XMK/EN	O	-	O	Black

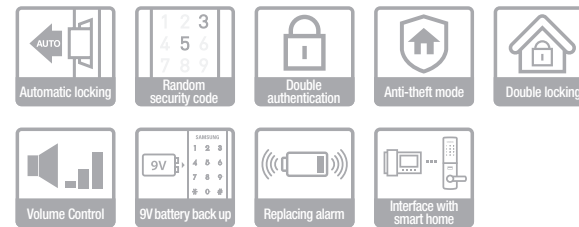
## Specification

Password	4~12 digit number combination
RFID Card/Password	Capacity 71 (max.)
Mechanical key	6 Pin bump proof, Groove side bar
Door thickness	35~55mm (1.4~2.2")
Power	DC 6V (AA Alkaline batteries) x 4
Battery life	Approximately 12 months (Average - 10 times per day)

Without handle type

# SHS-3321

- Keyless deadbolt lock.
- Standard 160/161 prep. installation.
- Adaptable to various door types by adjustable deadbolt.
- Easy installation as there is no need to make additional holes.



Size  
Exterior body : 68 x 180 x 36.5mm  
Interior body : 68 x 180 x 38.3mm

## Model code

Code	Lockset		Mechanical override key	Color
	Deadbolt	Rim lock		
SHS-3321XMK/EN	O	-	-	Black

## Specification

Password	4~12 digit number combination
RFID Card/Password	Capacity 71 (max.)
Door thickness	35~55mm (1.4~2.2")
Power	DC 6V (AA Alkaline batteries) x 4
Battery life	Approximately 12 months (Average - 10 times per day)



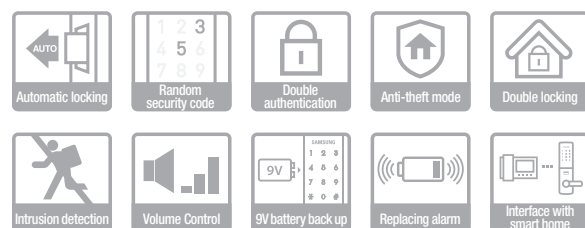
Access



Without handle type

# SHS-2320

- Reinforced protection with double claw bolt.
- Easier entrance confirmation with auto-identification icon.



Access



Size  
Exterior body : 65.2 x 170.5 x 22.5 mm  
Interior body : 182 x 90 x 40.7 mm



## Model code

Code	Lockset		Mechanical override key	Color
	Deadbolt	Rim lock		
SHS-2320XMK/EN	-	O	-	Black

## Specification

Password	4~12 digit number combination
RF ID card	Capacity 20 (max.)
Door thickness	40~50mm (1.6~2.0")
Power	DC 6V (AA Alkaline batteries) x 4
Battery life	Approximately 10 months (Average - 10 times per day)

Without handle type

# SHS-1321

- Best-selling model.
- Blue LED wake-up indicator.



Access



Size  
Exterior body : 69 x 175 x 22 mm  
Interior body : 181 x 92 x 48 mm



## Model code

Code	Lockset		Mechanical override key	Color
	Deadbolt	Rim lock		
SHS-1321XAK/EN	-	O	-	Black

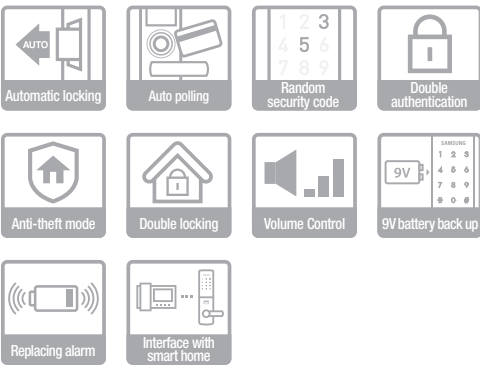
## Specification

Password	4~12 digit number combination
RF ID card	Capacity 20 (max.)
Door thickness	40~50mm (1.6~2.0")
Power	DC 6V (AA Alkaline batteries) x 4
Battery life	Approximately 10 months (Average - 10 times per day)



# SHS-G517

- A digital lock for frameless glass doors.
- Key pad will change orientation depending on door direction.
- Easy to install on the left/right side without any additional operation.
- Chime bell feature.



Size  
Exterior body : 78x173.4x18.1mm  
Interior body : 72x171.1x45.3mm



Both Direction Opening Strike (SHS-ASR200)

Model code

Code	Lockset		Mechanical override key	Color
	Deadbolt	Rim lock		
SHS-G517XMK/EN		O	-	Black

Specification

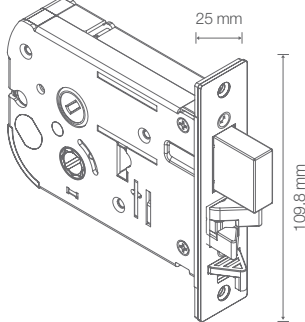
Password	4~12 digit number combination
RFID Card/Password	Capacity 71 (max.)
Door thickness	9-13mm (tempered glass door type, available for both of one and two door)
Power	DC 6V (AA Alkaline batteries) x 4
Battery life	Approximately 10 months (Average ~ 10 times per day)

# Optional Product

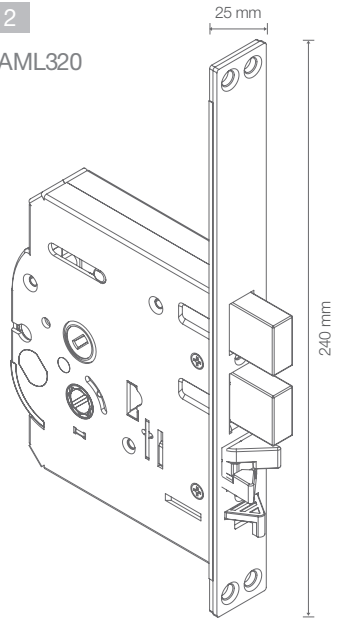
Mortise type for door locks

For door locks with handle, mortise selection is available for each door type.

Type 1  
SHS-AML220



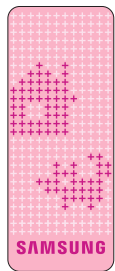
Type 2  
SHS-AML320



Mortise	Type 1	Type 2
Face panel size	25 x 109.8 (mm)	25 x 240 (mm)
Number of Deadbolts	1 pcs	2 pcs

Key tag

Key tag (Ring type)



SHS-AKT200R



SHS-AKT200K

Smart tag (Sticker type)



SHS-AKT300K



SHS-AKT300W

Parts to extend the door's thickness

Division	Code	Description
Door thickness extension (for door locks with handle)	SHS-ASM100/EN	Adjustable 61~80 (mm)
	SHS-ASM140/EN	Adjustable 40~60 (mm)
Door thickness extension (for Push-pull door lock)	SHS-ASM260/EN	Adjustable 61~80 (mm)
	SHS-ASM240/EN	Adjustable 40~60 (mm)

# Product List

		Smart Door Lock with handle				
		SHS-P718	SHS-P717	SHS-H705	SHS-H635	SHS-H625
Modle						
Capacity (Password)		31	31	11	1	1
Capacity (RF ID card)				X	20	20
Capacity (Finger print)		100	X	100	X	X
Random Security Code		O	O	O	O	O
Mechanical Override Keys		O	O	O	O	O
Lockset		Mortise Lock	Mortise Lock	Mortise Lock	Mortise Lock	Mortise Lock
Applicable Door Depth		38~80mm (1.5~2.0inch)	38~80mm (1.5~2.0inch)	40~80mm (1.6~3.1 inch)	40~80mm (1.6~3.1 inch)	40~80mm (1.6~3.1 inch)
Material		Zn, Al, ABS	Zn, Al, ABS	Zn, Al, ABS	Zn, Al, ABS	Zn, Al, ABS
Humidity		20~80%	20~80%	20~80%	20~80%	20~80%
Temperature		-20°C~ +55°C	-20°C~ +55°C	-20°C~ +55°C	-20°C~ +55°C	-20°C~ +55°C
Power		DC 6V AA Alkaline Battery (8)	DC 6V AA Alkaline Battery (8)	DC 6V AA Alkaline Battery (8)	DC 6V AA Alkaline Battery (8)	DC 6V AA Alkaline Battery (8)
Color		Black	Black	Black, Gold, Pink gold	Silver, Gold	Black
Battery Life		About 12 Months (Ten Times Per Day)	About 12 Months (Ten Times Per Day)	About 10 Months (Ten Times Per Day)	About 12 Months (Ten Times Per Day)	About 12 Months (Ten Times Per Day)
Product Size (WxHxD)mm	Exterior body	85x385x61(mm) 3.3x15.2x2.4(inch)	85x346.5x61(mm) 3.3x13.6x2.4(inch)	81.3x318x75(mm) 3.2x12.5x3.0(inch)	81x306x64(mm) 3.2x12.0x2.5(inch)	82x299x66.5(mm) 3.2x11.8x2.6(inch)
	Interior body	86x354.8x63(mm) 3.4x14.0x2.5(inch)	86x354.8x63(mm) 3.4x14.0x2.5(inch)	79x290x80(mm) 3.2x11.4x3.1(inch)	79x290x80 (mm) 3.2x11.4x3.1(inch)	79x290x80(mm) 3.2x11.4x3.1(inch)

\* All of the SAMSUNG Smart Door Locks above are interoperated with the Samsung Video Intercom (System), and Samsung Home Network System.

\* The Battery Life could be different according to installation, battery, and frequency of usage.

Smart Door Lock with handle	Smart Door Lock without handle				
SHS-H505	SHS-3220	SHS-3321	SHS-2320	SHS-1321	SHS-G517
					
31	71	71	1	1	71
			20	20	
X	X	X	X	X	X
O	O	O	O	O	O
O	O	X	X	X	X
Mortise Lock	Tubular lock	Tubular lock	Rim lock (Double claw Bolt)	Rim lock	Rim lock
40~80mm (1.6~3.1 inch)	35~55mm (1.4~2.2 inch)	35~55mm (1.4~2.2 inch)	40~50mm (1.6~2.0inch)	40~50mm (1.6~2.0 inch)	9~13mm (0.4~0.5 inch)
Zn, Al, ABS	Zn, Al, Polycarbonate	Zn, Al, Polycarbonate	Al, Acrylate, NBR Polycarbonate, SUS	Zn, Al, ABS Plastic	Zn, ABS, Al
20~80%	20~80%	20~80%	20~80%	20~80%	20~80%
-20°C~ +55°C	-20°C~ +60°C	-20°C~ +60°C	-20°C~ +60°C	-20°C~ +60°C	-20°C~ +60°C
DC 6V AA Alkaline Battery (8)	DC 6V AA Alkaline Battery (4)	DC 6V AA Alkaline Battery (4)	DC 6V AA Alkaline Battery (4)	DC 6V AA Alkaline Battery (4)	DC 6V AA Alkaline Battery (4)
Black	Black	Black	Black	Black	Black
About 18 Months (Ten Times Per Day)	About 12 Months (Ten Times Per Day)	About 12 Months (Ten Times Per Day)	About 10 Months (Ten Times Per Day)	About 10 Months (Ten Times Per Day)	About 10 Months (Ten Times Per Day)
82x302.4x66.1 (mm) 3.2x11.9x2.6 (inch)	68x180x36.5 (mm) 2.7x7.1x1.4 (inch)	68x180x36.5 (mm) 2.7x7.1x1.4 (inch)	65.2x170.5x22.5 (mm) 2.6x6.7x0.9 (inch)	69x175x22 (mm) 2.7x6.9x0.9 (inch)	78x173.4x18.1 (mm) 3.1x6.8x0.7 (inch)
79x290x80 (mm) 3.2x11.4x3.1 (inch)	68x180x38.3 (mm) 2.7x7.1x1.5 (inch)	68x180x38.3 (mm) 2.7x7.1x1.5 (inch)	182x90x40.7 (mm) 7.2x3.5x1.6 (inch)	181x92x48 (mm) 7.2x3.6x1.9 (inch)	72.7x171.1x45.3 (mm) 2.9x6.7x1.8 (inch)