

SSM (Samsung Security Manager) SAMSUNG NETWORK TOTAL MANAGEMENT SOFTWARE

FEATURES			
Video	Supported Video Compression Format	H.264, MPEG-4, MJPEG	
	Supported resolution	Depending on the device	
Audio	Supported Audio Compression Format	G.711 u-law (PCM), G.723, G.726 (ADPCM)	
	Functions	Bi-directional audio (Listen/Talk)	
Live Monitoring	Multi-monitor	Up to 4 monitors (Follow the recommended system requirement)	
	Screen-split mode	4:3 screen modes : 1/4/6/8/9/10/13/16/17/21/25/36/49/64 16:9 screen modes : 6/12/20/30 Full screen mode * While in multi-monitor environment, layouts and split modes for less than 100 channels will be available.	
	Sequence mode	Up to 16-splits per monitor	
	PTZ Control	Area Zoom, Go to 1xzoom, PTZ Sensitivity, Focus, Zoom, Patrol, Swing/Autopan, Group/Scan, Trace/Pattern, Preset, Iris control	
	Map monitoring	Split View Mode for Map Layout, Zoom in/out, Video popup (Instant viewer), Camera/Sensor/Alarm icons on the map	
	Simple Recording	Recording of the selected video tile during 1hour	
Search & Playback	Functions	OSD On/Off, Snapshot/Prints Image, Brightness/Contrast control, Keep Aspect Ratio/Original size, Deinterlacing, Flip, Digital zoom	
	Search mode	Date, Event, Smart Search, POS Search based on DVR, NVR, Local folder	
	Screen-split mode	Up to 16 footages can be played simultaneously	
	Video Control	Start/stop, Pause, Faster/Slower forward/backward, Step Forward/Backward, Skip Forward/Backward	
	Functions	Snapshot/Prints Image, Digital zoom	
	Backup	Local storage, back up format(AVI, SEC), Configurable schedule for backup(supported model only)	
Event Monitoring	Real-time event list	Shows real-time event list of the device (event status, type, device, user, time(PC)), Viewing instant video image	
	Searching events	- SSM : User, System - Device : System, Camera, Sensor, Alarm Out - Camera : Video Loss, Motion, Passing, Entering, Exiting, Disappearing (Appearing), Tampering, Scene Change, Tracking, Face Detection, Audio Detection	
	Reporting	Manual report (show events and statistics), print & Save function, format (excel, PDF, word)	
	Confirming	Set alarm details Normal/Abnormal/Etc, confirm action	
	History	The confirmed details of the selected event from the list	
	Instant Viewer	Display the selecting camera. Confirm the event, record event remarks and end the event status.	
	Instant Player	Plays the corresponding camera's video image	
	Event Action	Define various system actions (output) for events (input) from devices, action (output) types: Instant Viewer, Preset, Alarm out, Pop-up, Sound and E-mail notification	
	CONFIGURATION		
	Site/User management	Site/User group/User account management, Permission management for viewer functions	
Device management	Automatic device IP scanning, Viewing the device settings(Device webpage), Exporting/Importing devices settings, Updating the device firmware		
Screen management	Layouts	Setting/Adding/Deleting Layouts, Map/Video Layout	
	Monitor	Multi Monitor, Split Screen, Sequence, Using I-Frame, Using low-resolution	
Environment	OSD display, Date/Time, Capture, Recording, Screenshot, Language, UI auto lock, Log,		
System settings	Backup/Restore SSM setups, Restore the default settings		
Time synchronization	NTP Server, Client		
Update	Automatic self upgrade(Connection to Samsung upgrade server)		
GENERAL			
Supported devices	Samsung's N/W Camera, Encoder, DVR/NVR		
Maximum number of Media Gateways per system	Default 4 Media Gateway		
Maximum number of cameras per Media Gateway	N/W Camera 72channels or DVR/NVR 288channels(36)		
Maximum number of clients per Media Gateway	5 Clients		
Modules	System Manager, Media Gateway, Console, Service Manager, Schedule backup		
Language	Total 23 languages support : English, French, German, Spanish, Italian, Russian, Chinese, Japanese, Korean, Turkish, Polish, Czech, Serbian, Romanian, Portuguese, Dutch, Croatian, Hungarian, Greek, Swedish, Danish, Finnish, Norwegian		
System Requirement	Recommended	CPU Intel i7 (Sandy bridge) above, RAM 4GB above, Video memory 1GB above, HDD More than 20GB of free space for installation. (For operation, the system log database requires 10GB or more free space.), DirectX 8.1 above. Display resolution : 1,280 x 1,024 above, OpenGL compatible	
	Minimum	CPU Intel Core 2 Duo 2.83 GHz above, RAM 2GB above, Video memory 512MB	
	Operating System	- Console (Windows XP 32bit, Windows 7 32bit, Windows 7 64bit) - System Manager, Media Gateway (Windows XP 32bit, Windows 7 32bit, Windows 7 64bit, Windows Server 2003, Windows Server 2008)	
SUPPORTED MODELS			
N/W Camera	Box	SNB - 7002/7001/7000/5001/5000/3000/2000/1000/1001/3002, SNZ - 5200, SNO - 5080R/7080R/1080R SNC - B2335/B2331/M300/1300/550/570	
	Dome	SND - 7082/7080/5080(F)/3080(F)/3080(C)/1010 /1080/1011/3082 SND - 7061/7011/5061/5011 SNV - 7082(F)/7080/5080/3080/5010/3120/5080R/3082/1080/1080R SND - 560/460V, SNC - B5368/B5399	
	PTZ	SNP - 5200(H)/3430H/3370(H)/3301(H)/3120(V)/3302(H)/SNP - 6200(H) SNC - C6225/C7225/C7478, SNP - 3300A/1000A/3750/3350	
Encoder	SPE - 400/100/101, SPE - 1600R, SNS - 400/100		
DVR	SRD - 1670(D/DC)/1650(D/DC)/870(D/DC)/850(D/DC)/470(D)/440 SRD - 1630(D)/1610(D)/830(D), SRD - 1652D/852D, SRD - 480D, SRD - 442 SRD - 1640/840/1641/841, SVR - 1670/3200/1680(C)/1660(C)/1645/960(C)/945/480 SHR - 2000/5000/6000/7000/8000 SERIES, SVR - 1650E/1640A/950E		
NVR (H/W)	SRN - 6450/3250, SNR - 6400/3200, SRN - 1670D/470D, SRN - 1000		
NVR (S/W)	NET-i ware : SNS - SF064/032/016/008/004		
N/W CONTROLLER	SPC - 2000		

* The entire items are not supported in every device. Some items are not supported in certain devices.
* Recommended system requirement : 64ch connection, 64ch D1 resolution Display (using 1PC)
* Minimum system requirement : 16ch connection, 16ch CIF resolution display (using 1PC)



■ DISTRIBUTED BY



SAMSUNG TECHWIN CO., LTD. 701, Sampyeong-dong, Bundang-gu, Seongnam-si, Gyeonggi-do Korea 463-400
Tel : +82-70-7147-8741-8749, 8752-8760 Fax : +82-31-8018-3745 www.samsungsecurity.com www.samsungcctv.com

SAMSUNG TECHWIN AMERICA Inc.
100 Challenger Rd, Suite 700 Ridgeland Park, NJ 07660
Toll Free : +1-877-213-1222 Direct : +1-201-325-6920
Fax : +1-201-373-0124

SAMSUNG TECHWIN EUROPE LTD.
No5, The Height, Brookland, Weybridge, Surrey,
U.K. KT13 0NY
Tel : +44-1932-82-6700 Fax : +44-1932-82-6701

SHANGHAI SAMSUNG TECHWIN CO., LTD.
32F, BIK B, International Business Center, No. 391
Gulping Rd., Shanghai, China, 200233
Tel : +86-21-5427-1155 Fax : +86-21-5423-5122

SAMSUNG TECHWIN

iPOLiS.
Your smart security solution

SAMSUNG TECHWIN

SAMSUNG



Samsung's unified network video surveillance platform

Samsung Network Video Surveillance Management System

To maximize the benefits of network video surveillance solutions through an integrated management software whilst minimizing the complexity



SSM (Samsung Security Manager)

SAMSUNG NETWORK TOTAL MANAGEMENT SOFTWARE

SSM is a one-stop management software platform that maximizes the efficiency of Samsung's network products (including network cameras, encoders, DVRs and NVRs). The client-server architecture features stable video surveillance system management through multi-site and multi-client configuration. Access to the live/recorded videos is extremely easy from remote sites making it suitable for medium to large-scale multi site applications.

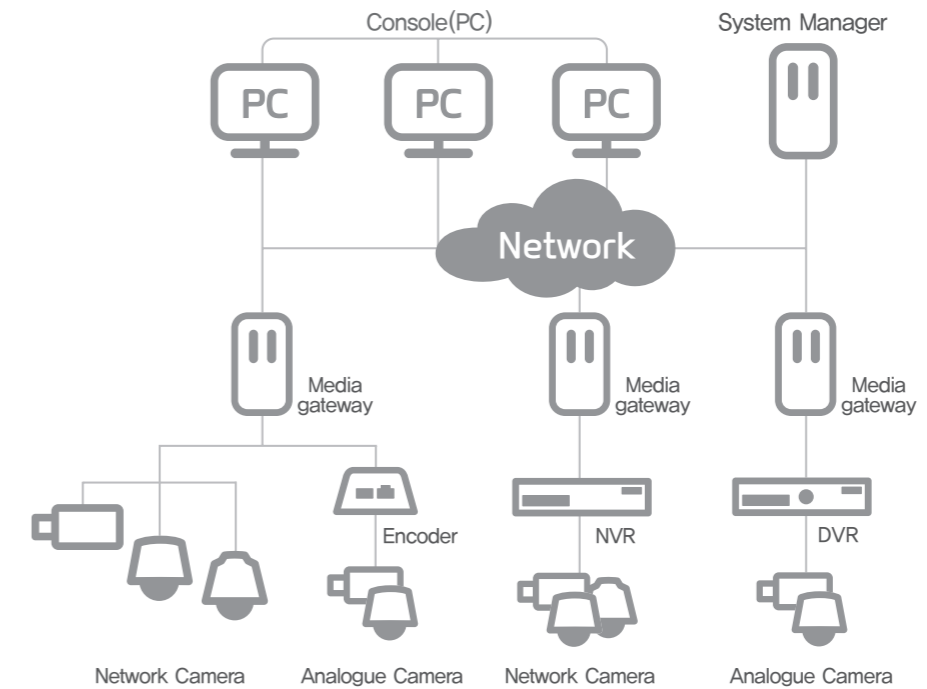
SSM Features

- Samsung network solution is the ideal choice for a total management system**
 Samsung Techwin's video surveillance products that include network cameras, encoders, DVRs and NVRs are effortlessly managed from a single SSM platform. The SSM is provided free of charge and is ideally suited to optimize the performance and management of Samsung network products.
- Efficient management via Multi-site & Multi-client configuration**
 Numerous clients can administer video surveillance products installed across multiple sites. This helps maximize the efficiency of the monitoring system enabling real-time management by the authorized personnel.
- Easy-to-use simple UI (User Interface)**
 Most of the essential functionalities required by users are possible with SSM; including simultaneous monitoring of maps/ live images, real-time event monitoring, playback and not forgetting an automatic health check for each device.
- A system that offers flexibility and expandability**
 Adding new or replacing old devices is an easy process so that they can be changed on demand or on system expansion, using a simple add/replace feature.
- Immediate event management using an auto event reaction setting**
 Users can set specific reactions for a certain type of events, this allows for the immediate control of typical events, enhancing the monitoring efficiency.

Multi-site / Multi-client monitoring

Conventional monitoring solutions have an on-site administrator to control the local devices; this can limit the scope when expanding the monitoring system. The SSM supports multi-site / multi-client monitoring that removes this limitation making it suited for mid to large sized monitoring applications.

Configuration modules



- Console : Provides the user with an interface for monitoring and control
- System Manager : Manages every piece of connected equipment and listed user within the system
- Media Gateway : Works as a server for the video from cameras, Pan/Tilt/Zoom, and event on a single platform

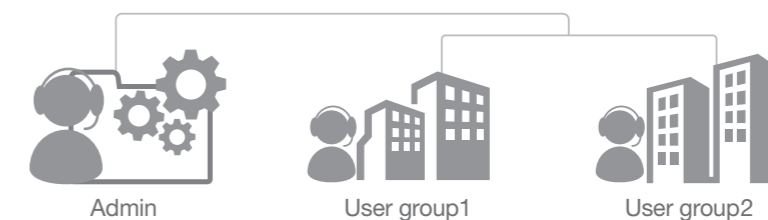
Up to 5 clients can simultaneously access the server that manages and monitors the remote devices with real-time access to the video sources, providing efficient/effective monitoring solution.

Expandability

Network connected Samsung Techwin products are registered and managed by SSM server. The media gateway server can handle 72 Samsung network cameras or 36 DVRs/NVRs (based on 8CH system, support up to 288CH). The server can search the connected equipment, support health checks and automatically-upgrade each device to ensure that they are maintained in the best condition.

Reliability and Security

Individual sites, users and user group management is controlled by the system manager. With this level of authorization access and management, certain sites or devices and management function can be controlled at user level.



One-stop Live / Map monitoring

Efficient live monitoring

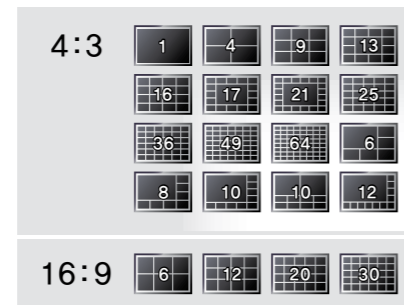
Samsung's intuitive UI design makes it simple to monitor live images and maps. One monitor can display 64CH, and with a maximum of 4 monitors connected up to 100CH can be monitored. The video images can be displayed in various formats; full screen, split screen, and 4:3/16:9, so that users can create best-fit layouts. If there are numerous administrators in a single control station, users can immediately load their own pre-saved display format layouts. The software will manage Samsung Techwin products and support image resolutions up to megapixel with a range of video/audio compression formats at different video profiles. These profiles will manage the network and computer environment to their optimum capability.

Simultaneous monitoring/playback support

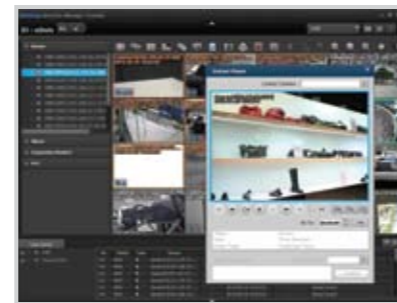
While monitoring a live view, the user can also playback recorded data on the same or a different device at the same time, this allows the user to compare the recorded data showing the suspicious event/person with the live view, helping to prevent potential incidents.



Live monitoring



Various display layouts



Instant player pop-up

Map monitoring

With SSM, an administrator can set a map-based layout to match with the live videos in real-time. Overlaying camera or sensor icons means the resolving of issues becomes extremely easy. By utilizing map based monitoring together with live monitoring, an event pop-up window will appear on the location where the event has happened helping towards a quick resolution to the event.



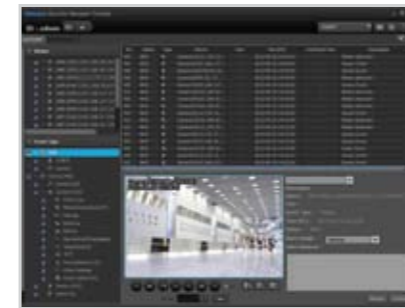
Map layout

Efficient Alarm/Event Monitoring

When there is an event/alarm input, the SSM system manager will instigate a set of pre-set follow up actions of the related device. Once an event occurs, manager and administrators can approve and write a comment on it. The result and status of the events are recorded and can be referred to in post-event reporting.

Event viewer

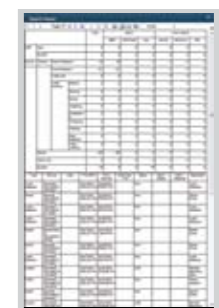
The real-time event viewer provides an event log that includes a single channel preview and event type that are easily viewed. Useful information such as sorting by event type, individual event comments and their approver can be displayed here. The event log also can be exported in excel/PDF format and used as evidence for the incident.



Event viewer



Instant viewer
(Event approval/Comment writing)



Report viewer

Event action

The setting of follow-up actions for each event can be managed in the event management function of the SSM. Matching motion detection, alarm or video loss with pop-up, move to preset and e-mail notification ensure prompt handling of events. For example, when network camera 1 gives a tampering event, pop-up for camera 2 which is installed in the corridor next to the camera 1 is possible providing the required information to the security staff.



Smart Search and Backup

Various searching mode

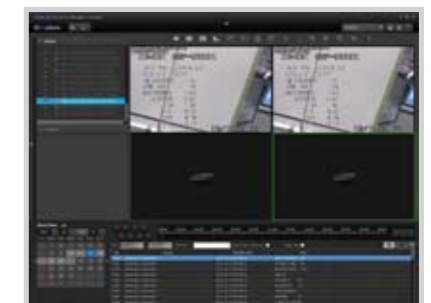
As well as date/time, POS (if using a Samsung DVR/NVR that support POS recording) and event/time-line searches which support preview images, a user can additionally check past events in a certain area or ROI (Region Of Interest). The Smart search from the SSM can extract the event that occurred in the ROI therefore reducing the search time.



Date/Time search



Smart search



POS search

Backup function

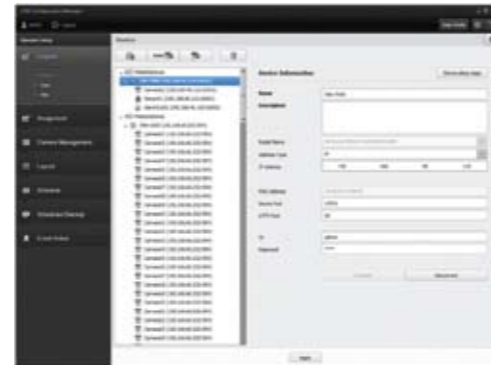
Manual back up mode allows the user to select the required time-line, while the schedule back up mode will automatically back up the recorded data of the DVR/NVR at the pre-determined time. The backup can be done on the SSM PC and the user can extract the video when required.

Easy & Convenient configuration

It can be difficult for the managers to set up all registration and setting process, (such as device set up, site configuration, user group assignment, and profile set up, etc). Through the configuration manager of SSM a helpful guide for each set up menu is available this assists anyone to easily complete the configuration procedure.



Set up mode selection



Configuration manager

Remote monitoring via mobile device

SSM mobile

Managers now have access to SSM via SmartPhone or tablet PCs where they can monitor live and recorded videos data. In addition, SSM mobile provides an easy-to-use user interface with preconfigured customized layout configurations that are setup on the main SSM.

※SSM mobile is supported by both Android and iOS(iPhone, iPad) and can be downloaded from the app store.



Bookmark



Live 4ch



LivePTZ

SSM mobile 1.0 specifications

DEVICE		Supported device	Samsung Security Manager
PERFORMANCE			
Video	Supported Video Compression Format	H.264, MJPEG	
	Supported resolution	Up to 1,280 x 1,024 resolution	
Audio	Supported Audio Compression Format	G.711 u-law (PCM), G.726 (ADPCM)	
	Functions	Listen (1ch)	
Live Monitoring	Screen-split mode	1ch / 4ch	
	View mode	Vertical, Horizontal	
PTZ Control	PTZ Control	Pan, Tilt, Zoom, Focus(Encoder/DVR only), Preset	
	Functions	Flip, Capture, Digital Zoom(16x), Display the network traffic status	
Search & Playback	Search mode	Date/time	
	Playback mode	1ch only, 8x playback speed	
Security	Functions	Bookmark	
Security		Password	
GENERAL			
Language		Total 23 languages support English, French, German, Spanish, Italian, Russian, Chinese, Japanese, Korean, Turkish, Polish, Czech, Serbian, Romanian, Portuguese, Dutch, Croatian, Hungarian, Greek, Swedish, Danish, Finnish, Norwegian	
Mobile device requirement	Recommended	CPU 1.2GHz, RAM 800MB, Available RAM 50MB or more, Network 3G, 4G(LTE), Wi-Fi	
	Operating System	Android OS v2.3.5, v4.0.3, v4.1.2 iOS OS v5.1.1, v6.0, v6.0.2, v6.1	
Tested mobile devices		This application had been tested for listed devices: Android - Samsung Galaxy S2 (Android v2.3.5) model - Samsung Galaxy S3 (Android v4.1.2) model - Samsung Galaxy Note (Android v4.0.3) model - Samsung Galaxy Note 10.1 (Android v4.1.2) model iOS - Apple iPhone 4 (iOS v6.1) model - Apple iPhone 5 (iOS v6.0.2) model - Apple iPad 2 (iOS v5.1.1) model - Apple iPad 4 (iOS v6.0) model	

* For proper monitoring with SSM mobile on your device, the device should suffice minimum requirements.